

DS-UTC1



USB TYPE-C 3.1 SATA/SSD 2.5"/3.5" HARD DRIVE DOCKING STATION



USER MANUAL

With a Sabrent USB 3.1 SATA/SSD 2.5"/3.5" HDD Docking Station you can Hot-Swap 2.5"/3.5" SATA Hard Drives when connected to your Desktop or Notebook. Tool free Plug & Play installation makes for an easy setup. You can now transfer data quickly and easily through USB Type-C 3.1 at high speeds up to 10Gbps.

PRODUCT OVERVIEW

HARD DRIVE BAY



POWER LED



TYPE-C USB 3.1 PORT

POWER PORT

ON/OFF SWITCH

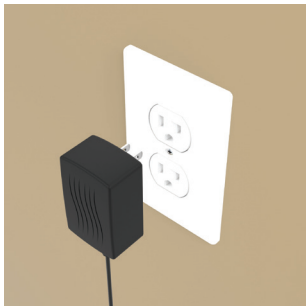
1

Connect the **Power Adapter** to the back of the dock



2

Connect the **AC Power Cord** to a power outlet



3

Connect the **USB Cable** to the back of the dock



4

Connect the other end of the **USB Cable** to your **Computer USB Port**



Note: If your computer has a **Type-C** port use the **Type-C** cable.
If your computer has a **Type-A** USB port use the **Type-C - Type-A** cable.

5

Insert your hard drive into the hard drive bay



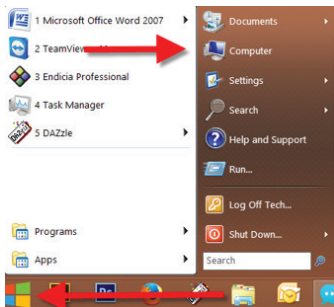
6

Press the power switch to On
The power LED should illuminate



WINDOWS PC HARD DRIVE WITH DATA/FILES

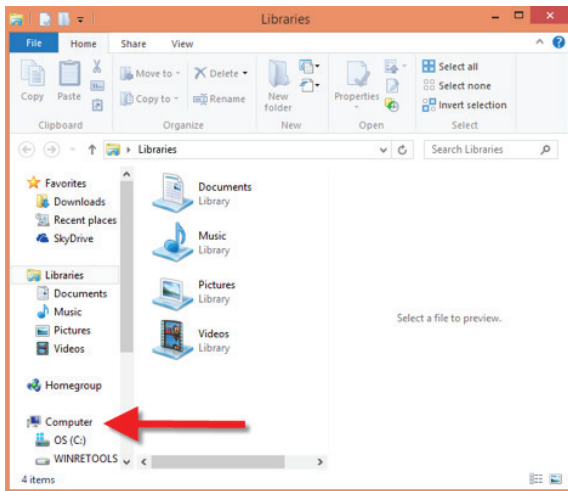
Click on the **Start Icon** located on the bottom left of the screen and then click on **Computer**



Note:

You can also click on the **File Explorer Icon** and then click on **This PC or Computer**



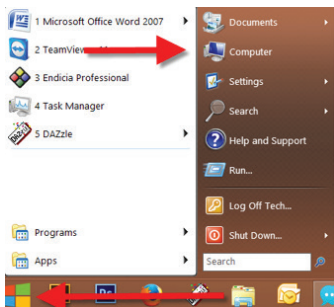


You should get a new drive letter every time you insert a hard drive with data/files

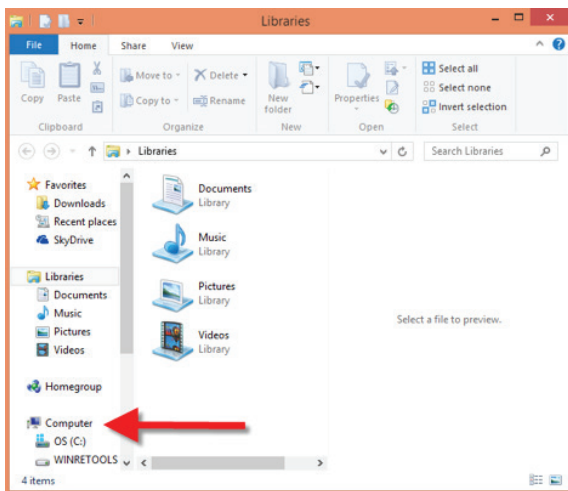
Name	Type	Total Size
OS (C:)	Local Disk	
WINRETOOLS (D:)	Local Disk	
DVD RW Drive (E:)	CD Drive	
New Volume (F:)	Local Disk	
Local Disk (G:)	Local Disk	

WINDOWS PC NEW HARD DRIVE SETUP (HARD DRIVE WITH NO DATA/FILES)

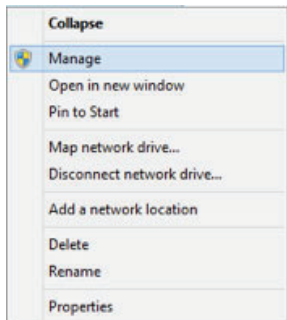
Click on the **Start Icon** located on the bottom left of the screen
and then **RIGHT** click on **Computer**



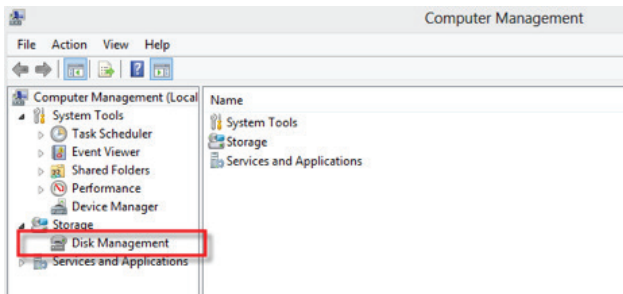
Note:
 You can also click on the File Explorer Icon
 and then click on This PC or Computer



Click on **Manage**

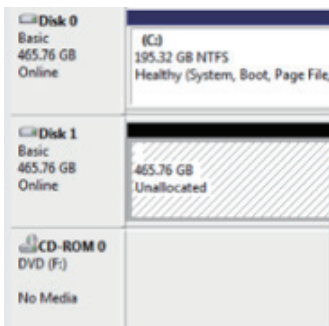


Click on **Disk Management**

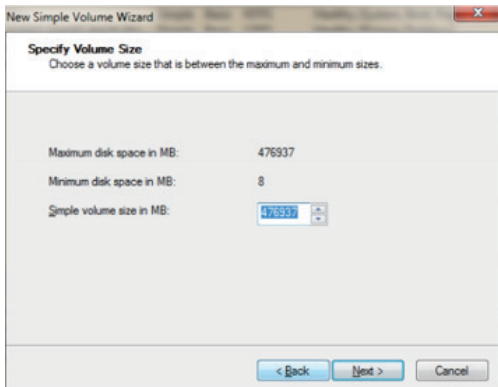


**Note: Disk 0 should be your internal hard drive
Disk 1 should be your external hard drive but SETUPS MAY DIFFER**

RIGHT click on **Unallocated** and click on **New Simple Volume**

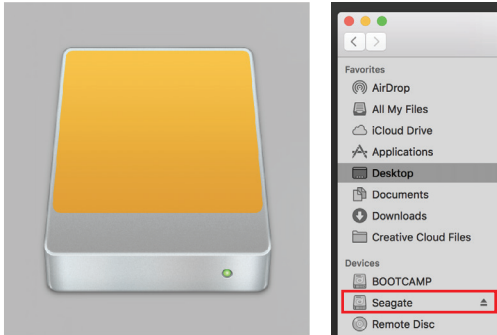


Go through the **Setup Wizard** to assign a drive letter



MAC OS HARD DRIVE WITH DATA/FILES

A new Icon should pop up on your main screen each time you insert a hard drive with DATA/Files

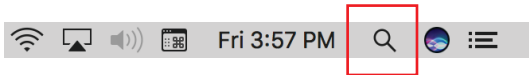


Click on the Icon to view your hard drive

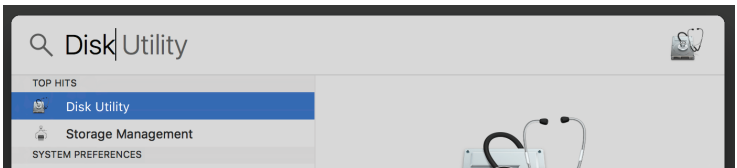
Note: You can also click on the Finder icon and select your hard drive under Devices

MAC OS NEW HARD DRIVE SETUP (HARD DRIVE WITH NO DATA/FILES)

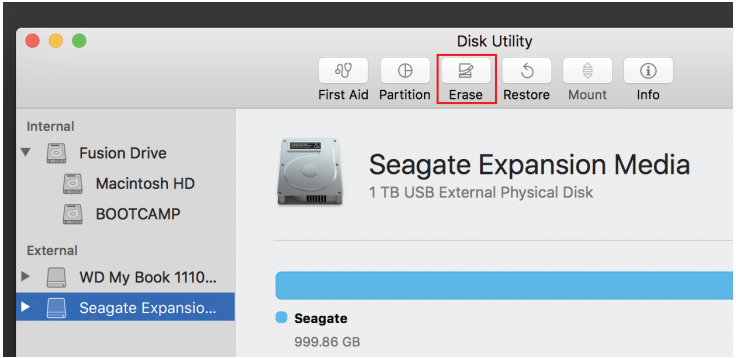
Click on the Search icon on your toolbar



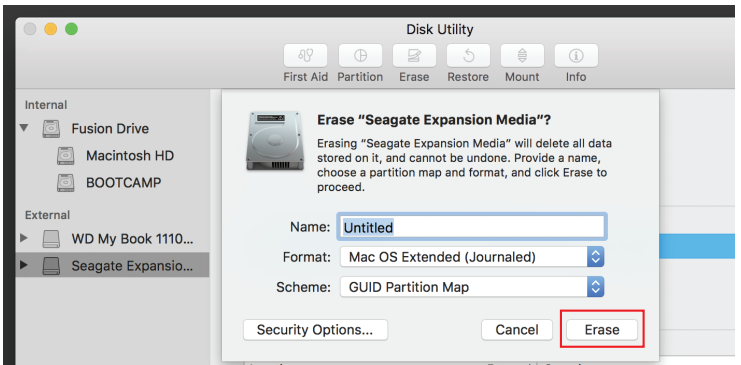
Type in Disk Utility and click on it



Click the icon for your external hard drive located in the sidebar on the left
Click on the Erase tab at the top of the window



Select the volume format you want and give it a name



Click on erase

Notes

- This is backwards compatible on USB 2.0 and 1.1 with their transfer speeds.
- Please do not remove your hard drive while hard drive is being accessed.

TROUBLESHOOTING/SUPPORT**Power LED does not come on?**

- Make sure that you have a tight connection between the power adapter and dock.
- Try it on a different power outlet.

HDD LED does not come on or turns off during offline clone?

- Re-seat the hard drive into the bay.
- Swap the hard drive out with a spare.

Computer does not recognize the hard drive?

- Make sure that you have a tight connection between the dock and 3.0 cable.
- Try the USB cable on a different USB port on your computer.
- New hard drive must be setup, please review new hard drive setup for your OS.
- Swap the hard drive out with a spare.

**PLEASE CONTACT OUR TECHNICAL SUPPORT TEAM
FOR ADDITIONAL TROUBLESHOOTING**

